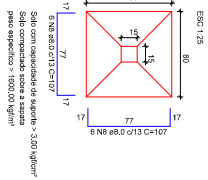
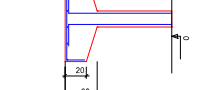


S16-S17-S18-S39-S40

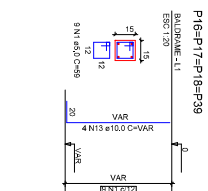


Planta ESC: 126



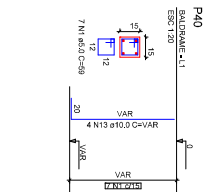
Corte ESC: 126

P16=P17=P18=P39



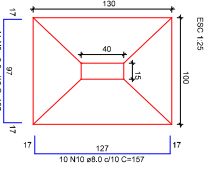
BALDRAME-L1 ESC: 126

P40

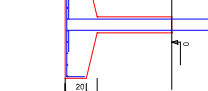


BALDRAME-L1 ESC: 126

S19-S21-S23-S25-S30-S32

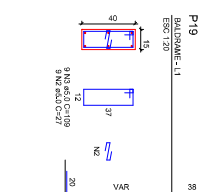


Planta ESC: 126



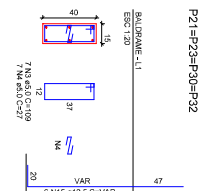
Corte ESC: 126

P19



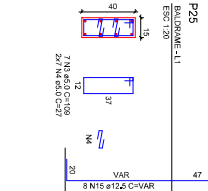
BALDRAME-L1 ESC: 126

P21=P23=P30=P32



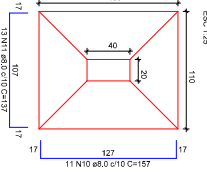
BALDRAME-L1 ESC: 126

P25

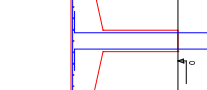


BALDRAME-L1 ESC: 126

S22-S24-S31-S33-S35-S39-S44-S46

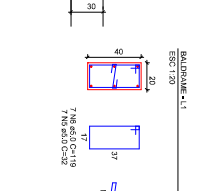


Planta ESC: 126



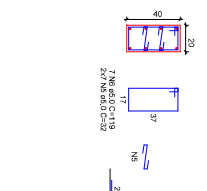
Corte ESC: 126

P22=P24=P31=P36



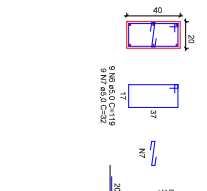
BALDRAME-L1 ESC: 126

P33=P44



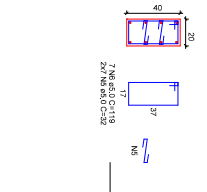
BALDRAME-L1 ESC: 126

P35



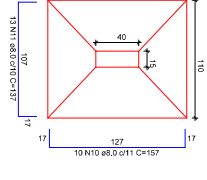
BALDRAME-L1 ESC: 126

P46

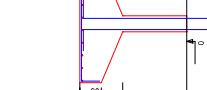


BALDRAME-L1 ESC: 126

S28

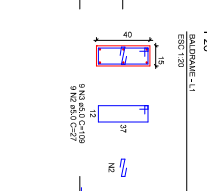


Planta ESC: 126



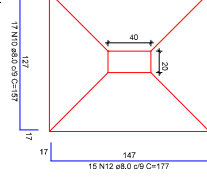
Corte ESC: 126

P26

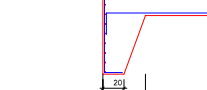


BALDRAME-L1 ESC: 126

S37

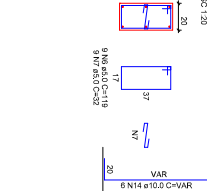


Planta ESC: 126



Corte ESC: 126

P37



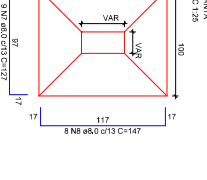
BALDRAME-L1 ESC: 126

P38

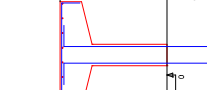


BALDRAME-L1 ESC: 126

S1-S2-S3-S4-S5-S6-S7-S8-S9-S10-S11-S12

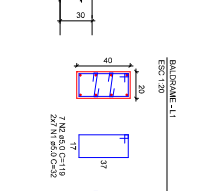


Planta ESC: 126



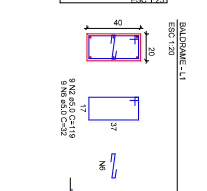
Corte ESC: 126

P1=P3=P5=P42



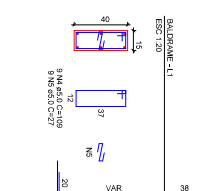
BALDRAME-L1 ESC: 126

P9=P10=P20=P48



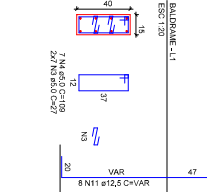
BALDRAME-L1 ESC: 126

P7=P8=P11=P12=P13=P14=P15=P27=P34=P47



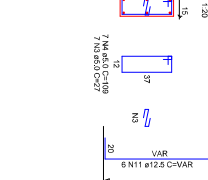
BALDRAME-L1 ESC: 126

P2=P4=P8=P45



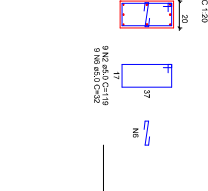
BALDRAME-L1 ESC: 126

P28=P43



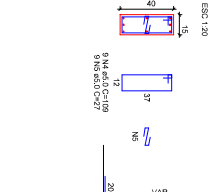
BALDRAME-L1 ESC: 126

P29



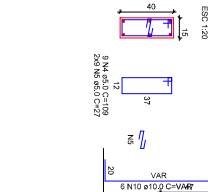
BALDRAME-L1 ESC: 126

P38



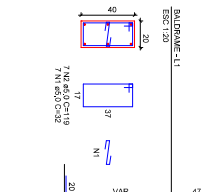
BALDRAME-L1 ESC: 126

P41



BALDRAME-L1 ESC: 126

P49=P50=P51



BALDRAME-L1 ESC: 126

Sólo con capacidad de sujeción > 3,00 kg/cm²
Sólo con capacidad de sujeción > 1000,00 kg/cm²

Sólo con capacidad de sujeción > 3,00 kg/cm²
Sólo con capacidad de sujeción > 1000,00 kg/cm²

Sólo con capacidad de sujeción > 3,00 kg/cm²
Sólo con capacidad de sujeción > 1000,00 kg/cm²

Sólo con capacidad de sujeción > 3,00 kg/cm²
Sólo con capacidad de sujeción > 1000,00 kg/cm²

Sólo con capacidad de sujeción > 3,00 kg/cm²
Sólo con capacidad de sujeción > 1000,00 kg/cm²

Sólo con capacidad de sujeción > 3,00 kg/cm²
Sólo con capacidad de sujeción > 1000,00 kg/cm²

Sólo con capacidad de sujeción > 3,00 kg/cm²
Sólo con capacidad de sujeción > 1000,00 kg/cm²

Sólo con capacidad de sujeción > 3,00 kg/cm²
Sólo con capacidad de sujeción > 1000,00 kg/cm²

RELACION DO AÇO

ACO	N	TOTAL	QUANT	COT/ML	COT/CM
CA60	1	43	29	253,8	10,9
CA60	2	5,0	3	57,7	2,4
CA60	3	5,0	3	57,7	2,4
CA60	4	5,0	3	57,7	2,4
CA60	5	5,0	3	57,7	2,4
CA60	6	5,0	3	57,7	2,4
CA60	7	5,0	3	57,7	2,4
CA60	8	5,0	3	57,7	2,4
CA60	9	5,0	3	57,7	2,4
CA60	10	5,0	3	57,7	2,4
CA60	11	5,0	3	57,7	2,4
CA60	12	5,0	3	57,7	2,4
CA60	13	5,0	3	57,7	2,4
CA60	14	5,0	3	57,7	2,4
CA60	15	5,0	3	57,7	2,4
CA60	16	5,0	3	57,7	2,4
CA60	17	5,0	3	57,7	2,4
CA60	18	5,0	3	57,7	2,4
CA60	19	5,0	3	57,7	2,4
CA60	20	5,0	3	57,7	2,4
CA60	21	5,0	3	57,7	2,4
CA60	22	5,0	3	57,7	2,4
CA60	23	5,0	3	57,7	2,4
CA60	24	5,0	3	57,7	2,4
CA60	25	5,0	3	57,7	2,4
CA60	26	5,0	3	57,7	2,4
CA60	27	5,0	3	57,7	2,4
CA60	28	5,0	3	57,7	2,4
CA60	29	5,0	3	57,7	2,4
CA60	30	5,0	3	57,7	2,4
CA60	31	5,0	3	57,7	2,4
CA60	32	5,0	3	57,7	2,4
CA60	33	5,0	3	57,7	2,4
CA60	34	5,0	3	57,7	2,4
CA60	35	5,0	3	57,7	2,4
CA60	36	5,0	3	57,7	2,4
CA60	37	5,0	3	57,7	2,4
CA60	38	5,0	3	57,7	2,4
CA60	39	5,0	3	57,7	2,4
CA60	40	5,0	3	57,7	2,4
CA60	41	5,0	3	57,7	2,4
CA60	42	5,0	3	57,7	2,4
CA60	43	5,0	3	57,7	2,4
CA60	44	5,0	3	57,7	2,4
CA60	45	5,0	3	57,7	2,4
CA60	46	5,0	3	57,7	2,4
CA60	47	5,0	3	57,7	2,4
CA60	48	5,0	3	57,7	2,4
CA60	49	5,0	3	57,7	2,4
CA60	50	5,0	3	57,7	2,4
CA60	51	5,0	3	57,7	2,4
CA60	52	5,0	3	57,7	2,4
CA60	53	5,0	3	57,7	2,4
CA60	54	5,0	3	57,7	2,4
CA60	55	5,0	3	57,7	2,4
CA60	56	5,0	3	57,7	2,4
CA60	57	5,0	3	57,7	2,4
CA60	58	5,0	3	57,7	2,4
CA60	59	5,0	3	57,7	2,4
CA60	60	5,0	3	57,7	2,4
CA60	61	5,0	3	57,7	2,4
CA60	62	5,0	3	57,7	2,4
CA60	63	5,0	3	57,7	2,4
CA60	64	5,0	3	57,7	2,4
CA60	65	5,0	3	57,7	2,4
CA60	66	5,0	3	57,7	2,4
CA60	67	5,0	3	57,7	2,4
CA60	68	5,0	3	57,7	2,4
CA60	69	5,0	3	57,7	2,4
CA60	70	5,0	3	57,7	2,4
CA60	71	5,0	3	57,7	2,4
CA60	72	5,0	3	57,7	2,4
CA60	73	5,0	3	57,7	2,4
CA60	74	5,0	3	57,7	2,4
CA60	75	5,0	3	57,7	2,4
CA60	76	5,0	3	57,7	2,4
CA60	77	5,0	3	57,7	2,4
CA60	78	5,0	3	57,7	2,4
CA60	79	5,0	3	57,7	2,4
CA60	80	5,0	3	57,7	2,4
CA60	81	5,0	3	57,7	2,4
CA60	82	5,0	3	57,7	2,4
CA60	83	5,0	3	57,7	2,4
CA60	84	5,0	3	57,7	2,4
CA60	85	5,0	3	57,7	2,4
CA60	86	5,0	3	57,7	2,4
CA60	87	5,0	3	57,7	2,4
CA60	88	5,0	3	57,7	2,4
CA60	89	5,0	3	57,7	2,4
CA60	90	5,0	3	57,7	2,4
CA60	91	5,0	3	57,7	2,4
CA60	92	5,0	3	57,7	2,4
CA60	93	5,0	3	57,7	2,4
CA60	94	5,0	3	57,7	2,4
CA60	95	5,0	3	57,7	2,4
CA60	96	5,0	3	57,7	2,4
CA60	97	5,0	3	57,7	2,4
CA60	98	5,0	3	57,7	2,4
CA60	99	5,0	3	57,7	2,4
CA60	100	5,0	3	57,7	2,4

RELACION DO AÇO

ACO	N	TOTAL	QUANT	COT/ML	COT/CM
CA60	1	5,0	3	57,7	2,4
CA60	2	5,0	3	57,7	2,4
CA60	3	5,0	3	57,7	2,4
CA60	4	5,0	3	57,7	2,4
CA60	5	5,0	3	57,7	2,4
CA60	6	5,0	3	57,7	2,4
CA60	7	5,0	3	57,7	2,4
CA60	8	5,0	3	57,7	2,4
CA60	9	5,0	3	57,7	2,4
CA60	10	5,0	3	57,7	2,4
CA60	11	5,0	3	57,7	2,4
CA60	12	5,0	3	57,7	2,4
CA60	13	5,0	3	57,7	2,4
CA60	14	5,0	3	57,7	2,4
CA60	15	5,0	3	57,7	2,4
CA60	16	5,0	3	57,7	2,4
CA60	17	5,0	3	57,7	2,4
CA60	18	5,0	3		